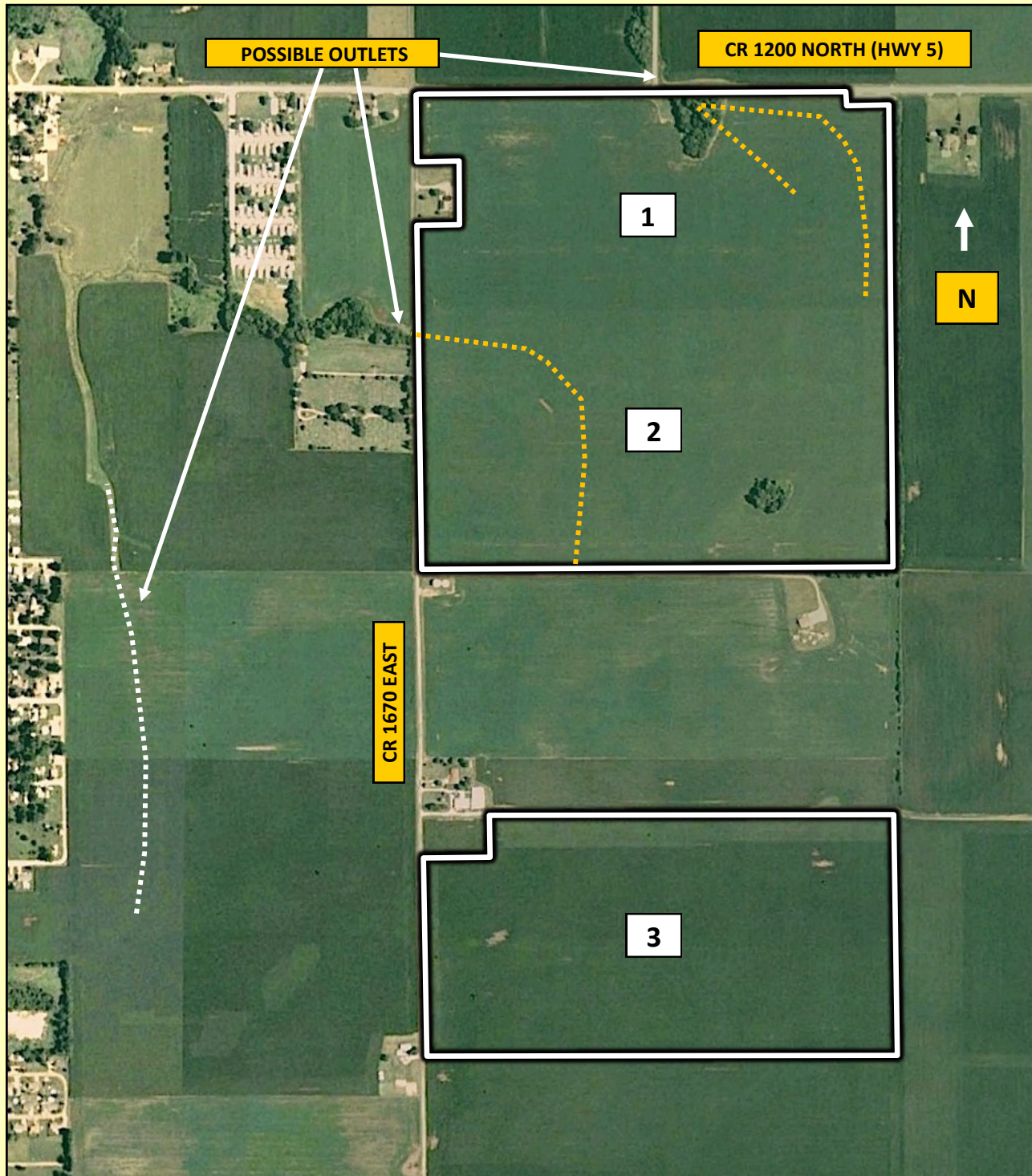


THE VERMILION 235 FARM AUCTION Drainage Information

The yellow dotted lines below represent the location of the known tile in the Somers Trust farm as per the tenant. It is presumed that there are other tile lines crossing the property (please see following page) but the exact size and location can not be determined. As shown, the farm does have open outlets for new tile on the north and west sides of Tracts 1 and 2.

The white dotted line west of Tract 3 marks the location of a known tile, and the field to the south also has a tile line that could possibly be used as an outlet, though no permission has been explicitly granted by these landowners.



THE VERMILION 235 FARM AUCTION

Drainage Information

The map below reflects the location of other possible tile lines on the farm. The information for the possible outlets was provided by the tenant

